

CHARISMA®

Product Information



Charisma® Classic

Experience × Research = Microglass® II effect.

Giving a hand to oral health.



KULZER
MITSUI CHEMICALS GROUP

Charisma® Classic

Experience x Research = Microglass® II effect.

It's easy. It's brilliant. It's for you.

You are looking for easy handling, high quality and reliability in restorations. And we strive to exceed your expectations and to continuously improve our products. So we have put our scientific expertise and long-standing experience into the development of a state-of-the-art filling material to meet your requirements for composite workability and natural brilliance.

The result is Charisma Classic – the next generation of Charisma, our classic filling material that has been used in millions of fillings for over twenty years by practitioners around the world.

With its easy handling features and creamy consistency Charisma Classic will instantly persuade you. But it is the highlight inside the composite that will convince you even more. The new Microglass® II filler technology provides prime results and an intrinsic shade brilliance. Single-shade layering techniques have never been this easy. See for yourself.



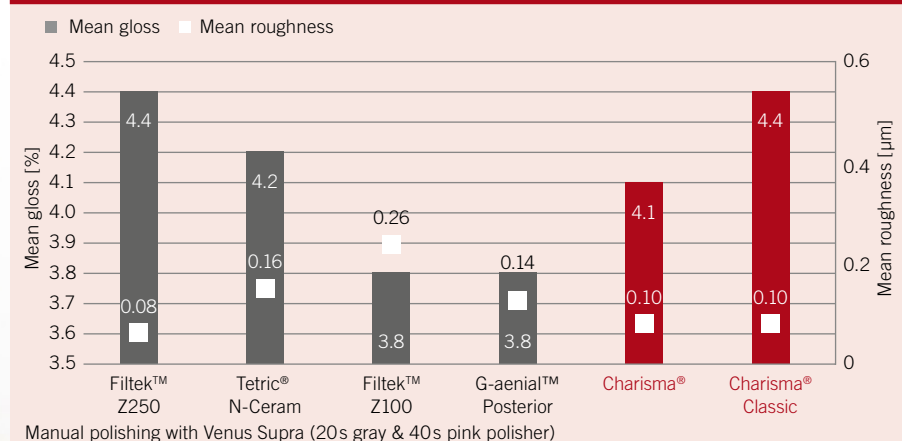
Your ideal companion to natural restorations.

Charisma Classic – Handle with ease.

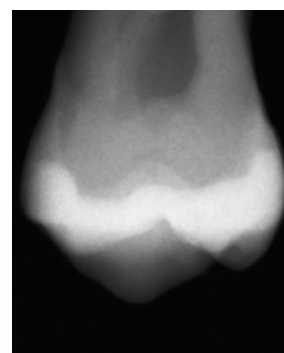
We want to make natural restorations as easy as possible for you. So we have always put our efforts into shaping the Charisma handling properties to your convenience. Charisma Classic, a light-curing, radiopaque microhybrid composite, is no exception to that rule. From its application to the light-curing, the handling of Charisma Classic is convincingly easy:

- Its creamy consistency allows easy and fast modelling.
- Excellent finishing and polishing properties facilitate a high surface lustre.
- The easy shade range permits a convenient shade selection and matching.
- Its radiopacity enables a safe and reliable diagnosis.

Charisma Classic reveals high gloss and smooth surfaces



Source: R & D Kulzer GmbH, Wehrheim, Germany.
Unpublished data. Data on file



► Charisma Classic enables a safe and reliable diagnosis.

Ideal for easy single-shade layering techniques ...

With Microglass® II we took Charisma to the next level of natural and long-lasting restorations. Colour adaption has become easy and reliable. Thanks to the refined filler technology, what you see is what you get.

... unless you are working on something more sophisticated?

The Charisma family also offers solutions for more complex cases. For multi-layering techniques we recommend Charisma Opal and Charisma Diamond. Both Charisma Opal and Charisma Diamond offer a wider range of shades in three different opacity levels for the creation of long-lasting, nature-like restorations.

Charisma® Classic

Your requirements and our experience add up to Microglass® II.

Natural restorations from a state-of-the-art technology.

We put all our expertise and long-term experience into our goal to advance a product that has been on the dental market for over 20 years and has been used in millions of fillings by practitioners around the world.

The result is Charisma Classic, the very first composite to offer the second generation of Microglass® filler technology. We developed this new and enhanced technology in close cooperation with practitioners worldwide – and made single-shade layering techniques much more easy.

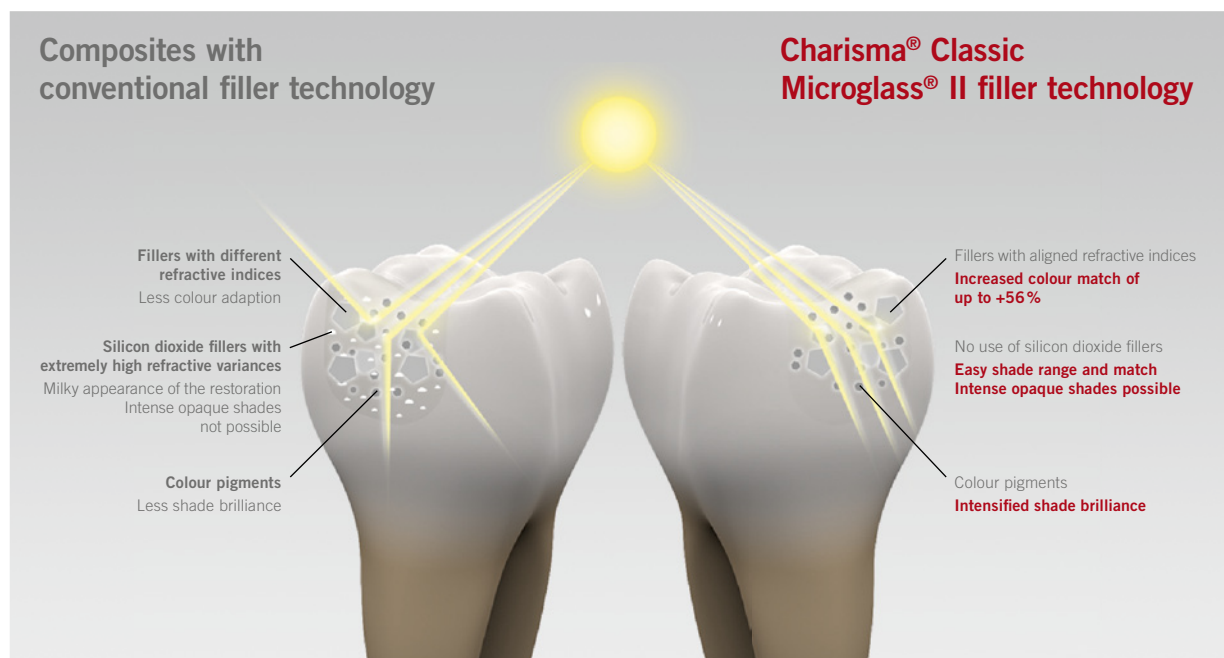
What is the Microglass® II effect?

Conventional composites often include highly dispersive Silicon dioxide (SiO_2) to prevent sedimentation of fillers. But this usually leads to an extremely high refractive variance and a milky appearance of the restoration. That is why good colour adaption and a natural look are much more difficult to achieve with those composites.

Charisma Classic contains approximately 61 % filler by volume with Barium Aluminium Fluoride glass. The new Microglass® II filler technology does not need any pyrogenic SiO_2 anymore and therefore offers an intrinsic shade brilliance and increased colour adaption of up to 56 %. All refractive indices of our matrix and filler system have been optimally aligned. Colour pigments ensure an intensified shade brilliance. The result: What you see is what you get!



Scan and learn more
about Microglass® II



Meet the benefits of the Microglass® II effect.

Easy single-shade layering techniques and more natural restorations.

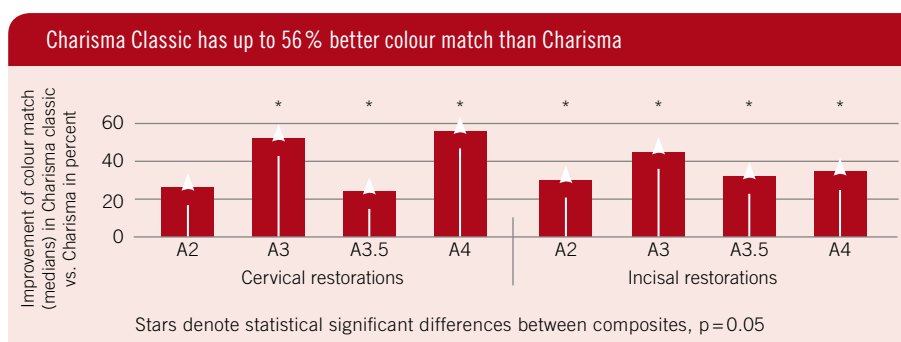
There's a lot to gain from our second generation filler technology. The Microglass® II effect has brought colour adaption to the next level. With Charisma Classic, you will experience a high shade brilliance. Getting the result that you want within the first layer has never been this easy.

Convenient shade selection and match.

Charisma Classic offers an easy shade range which contains the standard VITA shades and more intense opaque shades to easily mask discolorations. The shade guide consists of the Charisma Classic original material and not of acrylic. This assures colour fidelity between the shade taken and the restoration. Thanks to Microglass® II, what you see is what you get!

Mask discolorations more easily.

More intense opaque shades allow easy masking of discolored teeth as well as amalgam tattoos and the use in smaller cavities. This, too, is made possible by the Microglass® II technology.



Source: Prof. Giannini, Unicamp, Pricicaba, Brazil. Unpublished data. Data on file.



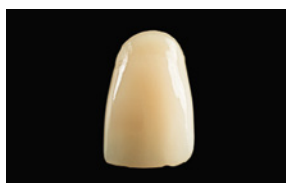
Charisma® Classic



Charisma®



Filtek™ Z250



Tetric® N-Ceram



Gradia® Direct



Amelogen® Plus

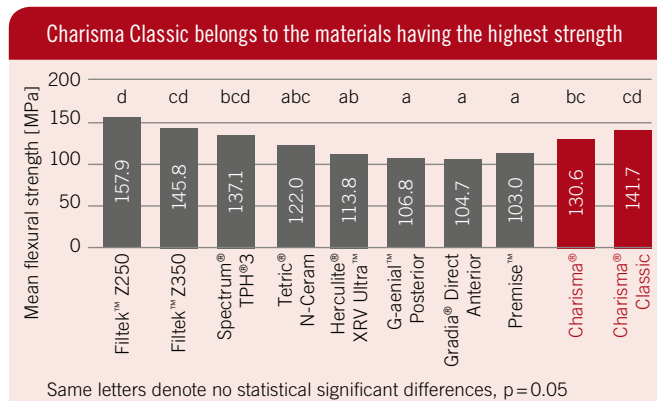
Charisma Classic shows an ideal colour match due to the Microglass® II effect. In contrast, the colour match of easy single-shade layering techniques with conventional composites is often not satisfying.

Charisma® Classic

The pride to improve something that has already been good.
Just for you.

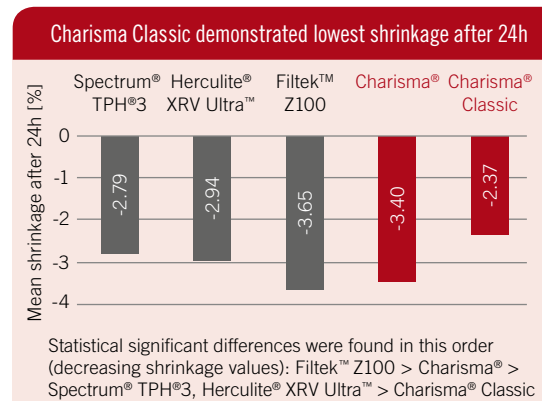
Extensive positive long-term experience and current studies.

The development of Charisma Classic was based on our long-term clinical experience with Charisma. Various internal and external studies have been conducted on Charisma Classic to ensure the same high quality and reliability for which its antecessor is famous for.



Source: Dr. Endo, Prof. Finger, Tohoku University, Sendai, Japan. Unpublished data. Data on file.

► Charisma Classic shows a very high flexural strength.



Source: Prof. Takahashi, Prof. Finger, Tokyo Medical & Dental University, Tokyo, Japan. Unpublished data. Data on file.

► Charisma Classic demonstrates lowest shrinkage stress after 24h.

Charisma Flow – The flowable all-rounder.

Charisma Flow is the ideal supplement to our microhybrid composite Charisma Classic. Its low viscosity and good thixotropy makes it the ideal choice for many indications like cavity lining, fissure sealing and minimal invasive fillings.

The Charisma Flow Baseline is a white and opaque shade that can be applied on the cavity floor to mark the transition to the natural hard tooth tissue. This means that unnecessary drilling away of healthy hard tooth tissue when removing an insufficient filling can be avoided.

Charisma Flow stands for safe usage and a high standard of naturally reliable restorations

- Versatile all-rounder for many indications.
- Easy and fast handling due to its low viscosity and good thixotropy.
- Its radiopacity enables a save and reliable diagnosis.
- Pronounced colour adaption.
- Shades of Charisma Flow optimally match the Charisma Classic shades.

Product range.

Charisma Classic Syringe Combi Kit 6x4 g + GLUMA 2Bond

2x4 g syringes each of the shades A2, A3
1x4 g syringe each of the shades A1, A3.5
1x4 ml GLUMA 2Bond
2x2.5 ml GLUMA Etch
35 Gel Pictorial Cards
Art.-No.: 66056109

Charisma Classic Syringe Combi Kit 8x4 g + GLUMA 2Bond

1x4 g syringe each of the shades A1, A2, A3, A3.5, B2, C2, OA2, OA3
1x4 ml GLUMA 2Bond
2x2.5 ml GLUMA Etch
35 Gel Shade Guide, Pictorial Cards
Art.-No.: 66056108

Charisma Classic Syringe Assortment 4x4 g

1x4 g syringe each of the shades A1, A2, A3, OA2
Shade Guide, Pictorial Card
Art.-No.: 66056110

Charisma Classic Syringe Assortment 8x4 g

2x4 g syringes each of the shades A2, A3
1x4 g syringe each of the shades A1, A3.5, B2, OA2
Pictorial Card
Art.-No.: 66056111

Charisma Classic Shade Guide

Art.-No.: 66056113

Shades	Charisma Classic	Charisma Flow
	Syringe 1 x 4 g	Syringe 1 x 1.8 g
A1	66056076	66015495
A2	66056077	66015496
A3	66056078	66015497
A3.5	66056079	66015498
A4	66056080	
B1	66056101	
B2	66056102	66015499
B3	66056103	66015500
C2	66056104	
OA2	66056105	66015501
OA3	66056106	
OA3.5	66056107	
OA4		66015502
OB2		66015503
Baseliner		66015504



Charisma EasyShine – High lustre in one single step.

Charisma EasyShine polishers with their diamond-enhanced formula deliver excellent long-lasting polishing results. Smoothing and high-lustre polishing in one step are possible by adapting the applied pressure.

The scope of bonding in one bottle, that is GLUMA® Bond Universal.

You do not want to change your bonding habits? You would like to keep your bonding routines as easy as possible? Based on our long-term bonding expertise, we developed GLUMA Bond Universal – a universal bonding answering to all your bonding needs. It is a reliable and highly effective adhesive that ensures successful long-term restorations.

One bottle of our genuinely universal adhesive brings you manifold benefits:

- One bottle for any bonding technique: total-etch, selective etch, and self-etch.
- One bottle for all dental materials.
- One bottle for a broad range of indications of direct and indirect restorations and intraoral repairs.
- One bottle for easy and safe handling with state-of-the-art performance.



New address as of 01 July 2017:

KULZER GmbH
Leipziger Straße 2
63450 Hanau
Germany



Contact in Germany

Heraeus Kulzer GmbH
Grüner Weg 11
63450 Hanau, Germany
info.dent@kulzer-dental.com

Tetric® N-Ceram is trademark of Ivoclar Vivadent AG • G-aenial™ Posterior, G-aenial™ Anterior, Gradia® Direct and Gradia® Direct Anterior are trademarks of GC Corporation • Herculite® XRV Ultra™ and Premise™ are trademarks of Kerr Corporation • Filtek™ Z250, Filtek™ Z350 and Filtek™ Z100 are trademarks of 3M Company • Spectrum® TPH® 3 is a trademark of Dentsply DeTrey GmbH • Amelogen® Plus is a trademark of Ultradent Products, Inc.